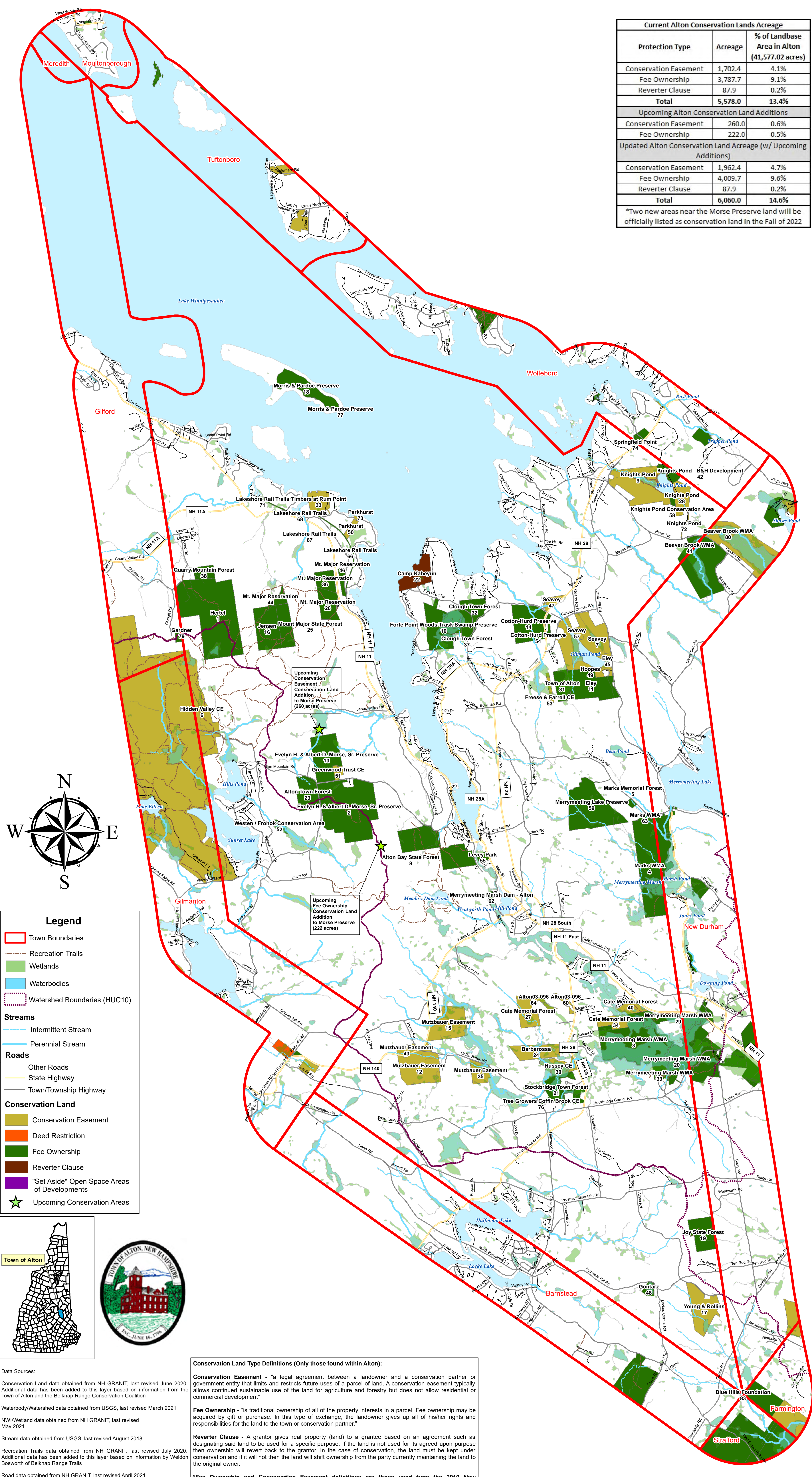


Alton Conservation Lands

Current Alton Conservation Lands Acreage		
Protection Type	Acreage	% of Landbase Area in Alton (41,577.02 acres)
Conservation Easement	1,702.4	4.1%
Fee Ownership	3,787.7	9.1%
Reverter Clause	87.9	0.2%
Total	5,578.0	13.4%
Upcoming Alton Conservation Land Additions		
Conservation Easement	260.0	0.6%
Fee Ownership	222.0	0.5%
Updated Alton Conservation Land Acreage (w/ Upcoming Additions)		
Conservation Easement	1,962.4	4.7%
Fee Ownership	4,009.7	9.6%
Reverter Clause	87.9	0.2%
Total	6,060.0	14.6%

*Two new areas near the Morse Preserve land will be officially listed as conservation land in the Fall of 2022



Legend

- Town Boundaries
- Recreation Trails
- Wetlands
- Waterbodies
- Watershed Boundaries (HUC10)

Streams

- Intermittent Stream
- Perennial Stream

Roads

- Other Roads
- State Highway
- Town/Township Highway

Conservation Land

- Conservation Easement
- Deed Restriction
- Fee Ownership
- Reverter Clause
- "Set Aside" Open Space Areas of Developments
- Upcoming Conservation Areas

Town of Alton

Data Sources:
 Conservation Land data obtained from NH GRANIT, last revised June 2020. Additional data has been added to this layer based on information from the Town of Alton and the Belknap Range Conservation Coalition
 Waterbody/Watershed data obtained from USGS, last revised March 2021
 NWI/Wetland data obtained from NH GRANIT, last revised May 2021
 Stream data obtained from USGS, last revised August 2018
 Recreation Trails data obtained from NH GRANIT, last revised July 2020. Additional data has been added to this layer based on information by Weldon Bosworth of Belknap Range Trails
 Road data obtained from NH GRANIT, last revised April 2021
 Town boundary data obtained from NH GRANIT, last revised April 2013

Conservation Land Type Definitions (Only those found within Alton):

Conservation Easement - "a legal agreement between a landowner and a conservation partner or government entity that limits and restricts future uses of a parcel of land. A conservation easement typically allows continued sustainable use of the land for agriculture and forestry but does not allow residential or commercial development"

Fee Ownership - "is traditional ownership of all of the property interests in a parcel. Fee ownership may be acquired by gift or purchase. In this type of exchange, the landowner gives up all of his/her rights and responsibilities for the land to the town or conservation partner."

Reverter Clause - A grantor gives real property (land) to a grantee based on an agreement such as designating said land to be used for a specific purpose. If the land is not used for its agreed upon purpose then ownership will revert back to the grantor. In the case of conservation, the land must be kept under conservation and if it will not then the land will shift ownership from the party currently maintaining the land to the original owner.

*Fee Ownership and Conservation Easement definitions are those used from the 2010 New Hampshire Municipal Conservation Fund Guidebook

Coordinate System: NAD 1983 StatePlane New Hampshire FIPS 2800 Feet
 Projection: Transverse Mercator
 Datum: North American 1983
 False Easting: 984,250,000.0
 False Northing: 0.0000
 Central Meridian: -71.6667
 Scale Factor: 1.0000
 Latitude Of Origin: 42.5000
 Units: Foot US

Scale: 1 inch = 0.5 miles

Alton Conservation Lands NRI Map
 Created: September 28, 2021
 Last revised: October 6, 2022

Prepared for the Town of Alton, NH
 This map should only be used for planning purposes,
 not for legal bound interpretation.

Stoney Ridge Environmental, LLC
 8 Kiana Road
 Alton, NH 03809
 Phone: 603-776-5825